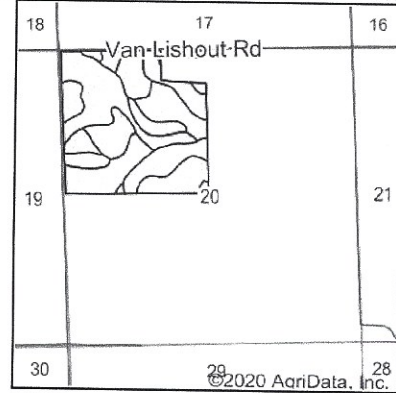
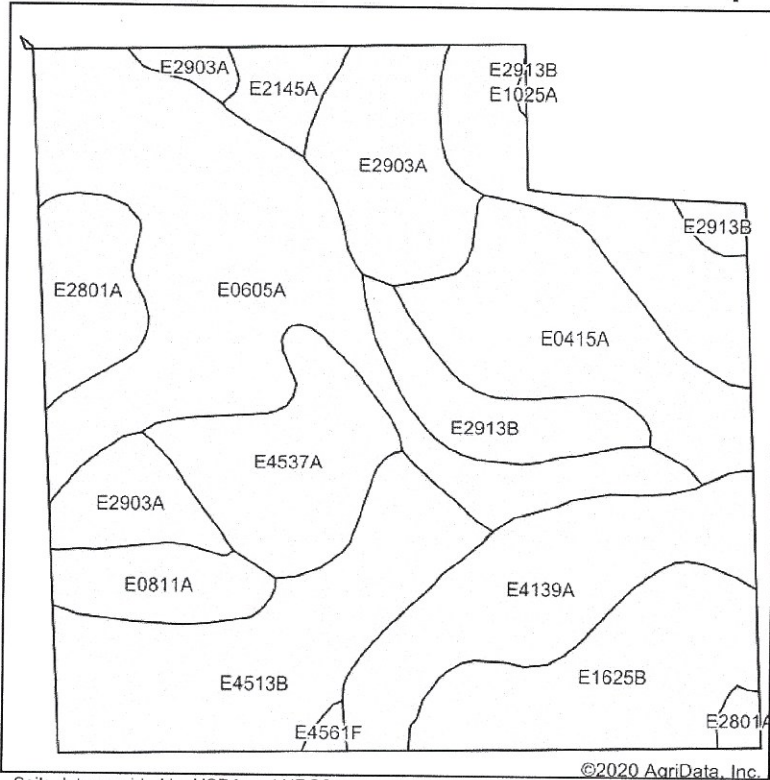


Soils Map



State: **North Dakota**
 County: **Hettinger**
 Location: **20-134N-92W**
 Township: **Beery**
 Acres: **142.87**
 Date: **8/12/2020**

BITZREALTY

Maps Provided By
surety
 CUSTOMIZED ONLINE MAPPING
 © AgriData, Inc. 2020 www.AgriDataInc.com



Soils data provided by USDA and NRCS.

©2020 AgriData, Inc.

Area Symbol: ND041, Soil Area Version: 19

Code	Soil Description	Acres	Percent of field	Non-Irr Class *c	Productivity Index	*n NCCPI Soybeans
E0605A	Belfield-Grail clay loams, 0 to 2 percent slopes	29.95	21.0%	IIs	82	31
E4139A	Korchea-Fluvaquents complex, channeled, 0 to 2 percent slopes, frequently flooded	23.68	16.6%	VIw	43	14
E4513B	Lehr-Stady loams, 2 to 6 percent slopes	17.52	12.3%	IIIe	50	22
E2903A	Chama-Sen silt loams, 0 to 3 percent slopes	14.22	10.0%	IIIe	72	32
E0415A	Belfield-Daglum complex, 0 to 2 percent slopes	14.18	9.9%	IIs	60	28
E1625B	Vebar-Parshall fine sandy loams, 3 to 6 percent slopes	12.60	8.8%	IIIe	63	28
E4537A	Stady loam, 0 to 2 percent slopes	10.18	7.1%	Ile	61	25
E2913B	Chama-Sen-Cabba silt loams, 3 to 6 percent slopes	6.64	4.6%	IIIe	67	31
E2801A	Amor-Arnegard loams, 0 to 3 percent slopes	6.14	4.3%	IIs	81	31
E0811A	Grail silty clay loam, 0 to 2 percent slopes	4.61	3.2%	IIC	96	35
E2145A	Shambo loam, 0 to 2 percent slopes	2.61	1.8%	IIC	87	44
E4561F	Manning-Schaller-Wabek complex, 6 to 35 percent slopes	0.44	0.3%	IVe	26	16
E1025A	Regent-Savage silty clay loams, 0 to 3 percent slopes	0.10	0.1%	IIs	84	25
Weighted Average					64.9	*n 26.5

*n: The aggregation method is "Weighted Average using all components"

*c: Using Capabilities Class Dominant Condition Aggregation Method

Soils data provided by USDA and NRCS.