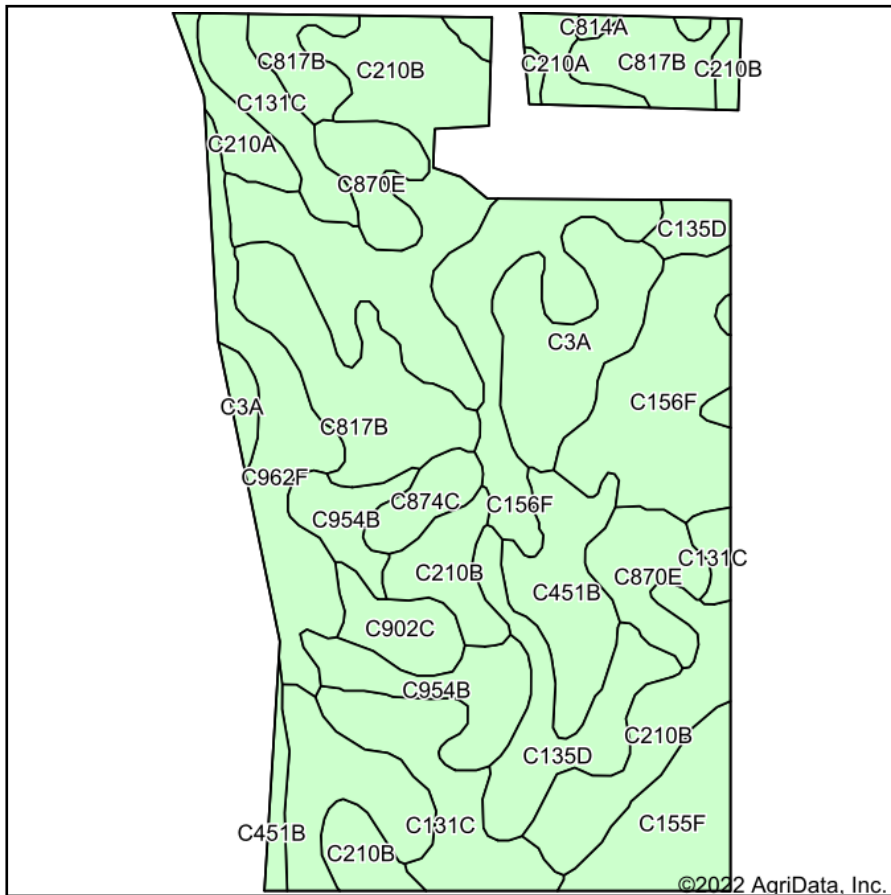
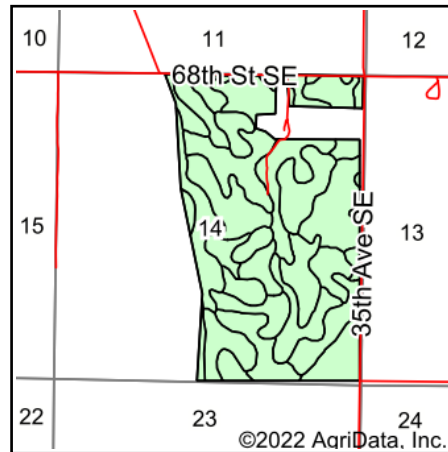


# Soils Map



Soils data provided by USDA and NRCS.



State: **North Dakota**  
 County: **Logan**  
 Location: **14-134N-72W**  
 Township: **Starkey**  
 Acres: **335.91**  
 Date: **8/9/2022**

**BITZREALTY**

Maps Provided By:



Area Symbol: ND047, Soil Area Version: 24

Code	Soil Description	Acres	Percent of field	Non-Irr Class *c	Productivity Index	*n NCCPI Soybeans
C210B	Williams-Bowbells loams, 3 to 6 percent slopes	65.88	19.6%	Ile	83	51
C156F	Zahl-Max-Bowbells loams, 6 to 35 percent slopes	43.75	13.0%	VIIe	36	23
C817B	Lehr-Bowdle loams, 2 to 6 percent slopes	35.56	10.6%	IIIe	50	25
C155F	Zahl-Max-Arnegard loams, 15 to 60 percent slopes	28.02	8.3%	VIIe	25	15
C131C	Williams loam, 6 to 9 percent slopes	27.62	8.2%	IIIe	68	50
C3A	Parnell silty clay loam, 0 to 1 percent slopes	21.29	6.3%	Vw	20	4
C962F	Werner-Amor-Arnegard loams, 9 to 50 percent slopes	20.29	6.0%	VIe	26	21
C135D	Zahl-Williams loams, 9 to 15 percent slopes	19.10	5.7%	VIe	43	45
C451B	Arnegard loam, 2 to 6 percent slopes	17.35	5.2%	Ile	93	53
C870E	Wabek-Lehr-Appam complex, 9 to 25 percent slopes	17.23	5.1%	VIIIs	23	16
C954B	Regent-Savage silty clay loams, 3 to 6 percent slopes	17.19	5.1%	Ile	81	33
C210A	Williams-Bowbells loams, 0 to 3 percent slopes	9.32	2.8%	Ilc	86	51
C902C	Amor-Cabba loams, 6 to 9 percent slopes	6.88	2.0%	IIIe	53	32
C874C	Wabek-Appam complex, 6 to 9 percent slopes	5.23	1.6%	VIs	26	16
C814A	Bowdle-Lehr loams, 0 to 2 percent slopes	1.20	0.4%	IIIs	52	26
<b>Weighted Average</b>				<b>4.26</b>	<b>53.4</b>	<b>*n 32.7</b>

\*n: The aggregation method is "Weighted Average using all components"

\*c: Using Capabilities Class Dominant Condition Aggregation Method

Soils data provided by USDA and NRCS.