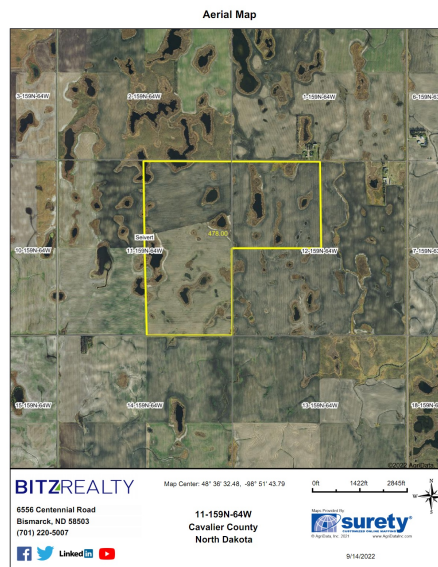


# BITZ AUCTION



## FORMER ALFRED & ERNA EITZEN PROPERTY MUNICH, ND

**Day:** THURSDAY  
**Start:** October 6, 2022 8:00 AM  
**End:** October 18, 2022 1:00 PM

### Driving Instructions:

[Cavalier](#)

[Additional Information](#)

### Maps Located Under Documents

**ONLINE AUCTION  
BIDDING STARTS-64W  
OCTOBER 6, 2022  
BIDDING ENDS 1:00 PM  
OCTOBER 18, 2022**

PROPERTY IS LOCATED APPROX. 5 MILES SW OF MUNICH, ND

### *Great Hunting Area*

**PROPERTY DESCRIPTION**  
**NW1/4 Of Section 12-159-64**  
**NE1/4 Of Section 11-159-64**  
**SE1/4 Of Section 11-159-64**

Property Will Be Offered As ONE 480 Acre Parcel

Property Consists Of 480 Taxable Acres. Approx. 340 Acres Are presently Tilled. Balance Of Land Is Lowland With A US Government Wildlife Easement.  
The Tillable Acres Have A High Productivity Index

Additional Information: For Online Bidding,  
Telephone Bidding Or Other Information  
Call Vincent Bitz 701-220-5007 Or Steven Bitz  
701-400-6895 Or Contact Us On The Website  
[www.bitzauction.com](http://www.bitzauction.com) Or Steven Or Vince  
[@BitzRealty.com](mailto:@BitzRealty.com)